

Did You Know?

The City's East Plant is a Massachusetts 'Grade 7' Rated Treatment Plant and the second largest plant in central Massachusetts. Sewage flow is received from the **40,000+** residents and businesses of Fitchburg, as well as from portions of the towns of Westminster and Lunenburg. Our WWTF can treat up to 12.4 MGD of flow from residential, commercial, and industrial users everyday.



FITCHBURG

Massachusetts

Department of Public Works
Wastewater Division
301 Broad Street | Fitchburg, MA 01420
978-829-1930 | ci.fitchburg.ma.us

CITY OF FITCHBURG, MASSACHUSETTS

Department of Public Works

Wastewater Division



DPW Deputy Commissioner of Wastewater

Mark McNamara

mmcnamara@fitchburgma.gov

Wastewater Administrations Coordinator

Wendy Boulay

wboulay@fitchburgma.gov

Superintendent of Treatment Operations

Brian Nolan

bnolan@fitchburgma.gov

Maintenance Engineer

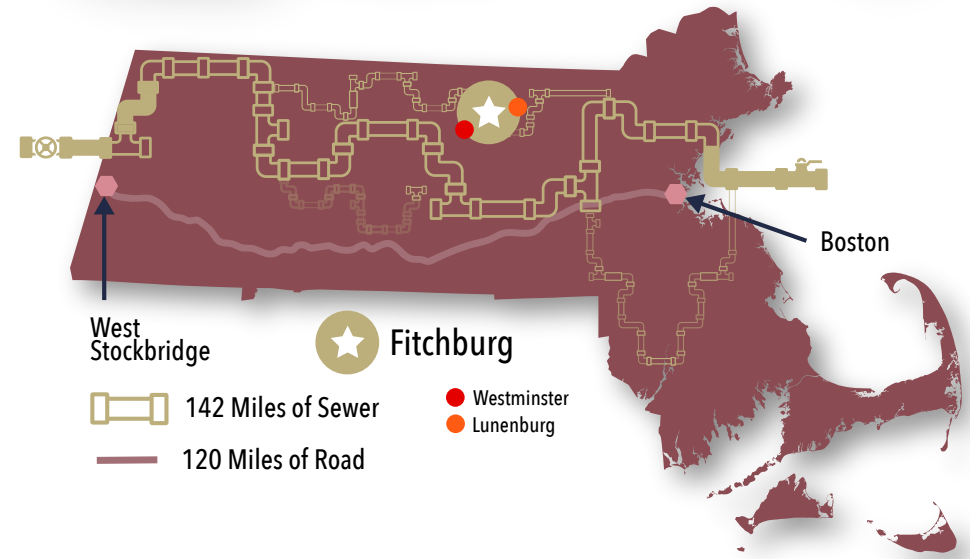
Kenneth Letourneau

kletourneau@fitchburgma.gov

Sewer System Manager

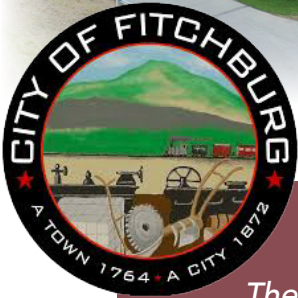
Kenny Dupont

kdupont@fitchburgma.gov



REPORT A CONCERN

Use the SeeClickFix app to submit non-emergency requests



MISSION STATEMENT

The mission of the Fitchburg Department of Public Works (DPW) Wastewater Division is to convey and treat domestic, commercial, and industrial wastewater to a level that meets or exceeds water quality limits for the Nashua River as set by the U.S. Environmental Protection Agency (US EPA) in the most efficient and cost effective manner possible.

CITY OF FITCHBURG DPW - Wastewater Division

The City is required to adhere to federal and state environmental laws and regulations to protect the health of Fitchburg's residents as well as that of downstream communities, and to protect the health and viability of the environment against wastewater transmitted sources of human-caused pollution.

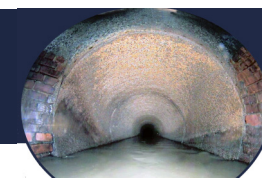
In Fitchburg, through compliance with the City's regulatory operating National Pollution Discharge Elimination System (NPDES) permit, the DPW - Wastewater Division is the professional authority charged with this important responsibility.

Fitchburg residents rely on the DPW - Wastewater Division to protect not only the community's health but also the health of the environment.

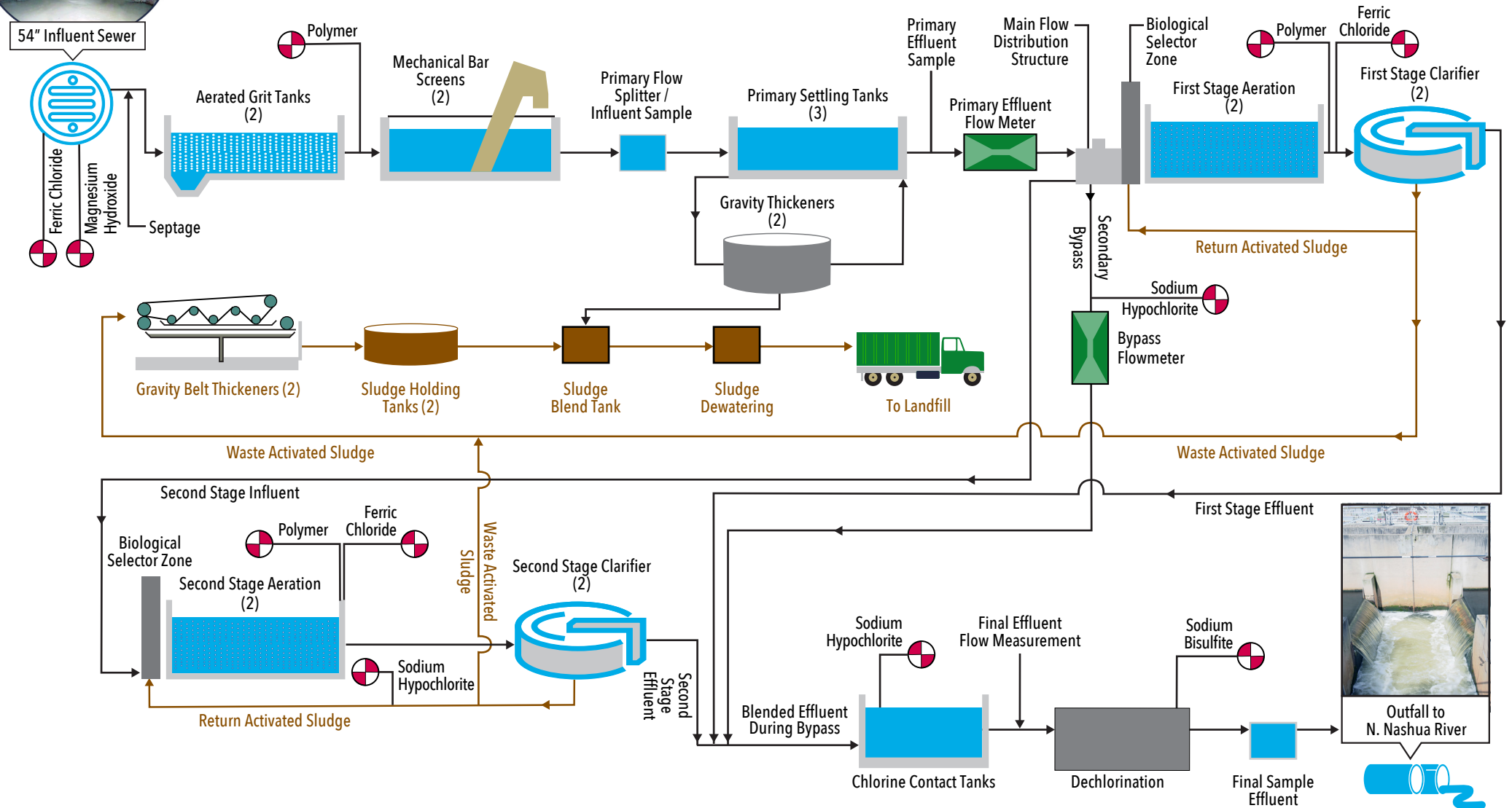
The oldest sewers in Fitchburg were built in the late 1800s. Wastewater treatment began in the early 1900s, and was replaced with the present day Easterly Wastewater Treatment Plant, built in the early 1970s. The East Plant is located in the southeast corner of the City at 24 Lanides Lane, across the Nashua River from the Fitchburg Municipal Airport.

The East Plant provides preliminary, primary and secondary treatment of the incoming wastewater, and has a rated design treatment capacity of 12.4 million gallons per day (MGD). By plant optimization, the plant is capable of fully treating peak flow capacities of 20 MGD or more, before engaging surplus flow bypassing of secondary treatment.

Treatment removes pollutants including solids, organic matter pollution, nutrients, pathogenic microbes, and toxic metals, preventing adverse impacts to the North Branch of the Nashua River. Treatment also ensures that effluent discharge has enough dissolved oxygen and has a neutral pH (between pH of 6.5 and 8.3). Treatment also disposes of solids residuals in an environmentally responsible manner.



Process Flow Diagram of the Easterly Wastewater Treatment Facility



Aerial Site Plan



This tank of sodium hypochlorite, located in the CEPT Building, is used with both disinfection and odor control.



LEGEND

- A** Main Control Building
- B** Headworks Building and Aerated Grit Tanks
- C** Primary Settling Tanks (3)
- D** Parshall Flume Flow Meter and Flow Splitting Box
- E** 1st Stage Aeration Tanks
- F** 1st Stage Secondary Clarifier Tanks (2)
- G** 2nd Stage Aeration Tanks
- H** 2nd Stage Secondary Clarifier Tanks (2)
- I** Chlorine Contact Tanks
- J** Chlorination Building
- K** CEPT Building
- L** Solids Holding Tanks (2)
- M** Sludge Gravity Thickening Tanks (2)
- N** Blower Building
- O** Standby Electric Power Generators