



Fitchburg
FORWARD
Mayor Sam Squaillia

APRIL 2025



FITCHBURG ARTS COMMUNITY

A DECADE LONG VISION REALIZED

As NewVue Communities prepares to open the Fitchburg Arts Community (FAC) starting April 2025, Executive Director Marc Dohan describes it as more than just housing—it's a symbol of revitalization and reimagining an entire neighborhood. Built on Fitchburg's cultural strengths like the Fitchburg Art Museum, Fitchburg State University, and its rich diversity, the FAC transforms historic properties—including the former BF Brown School and City Stables—into vibrant, affordable homes designed with artists in mind. The goal is to bring people downtown, remove blight, restore a neighborhood park, and reawaken civic pride.

Ten years in the making, this project has weathered fires, funding gaps, legislative hurdles, and a pandemic—but NewVue stayed the course, choosing the harder path to revitalize an entire neighborhood rather than settle for short-term solutions. As Marc Dohan puts it, "We built artist-preference housing because it builds on Fitchburg's assets... We wanted to create a great destination." With housing in high demand and a renewed focus on creativity and community, the Fitchburg Arts Community represents a new chapter in the city's transformation.



2025

Fitchburg Mass April Events

Fitchburg State University presents 18th Annual Drag Show, hosted by Gay Straight Alliance, Athletics and Recreation Center,
Thursday April 3, 2025 7 p.m.

"Alice in Wonderland" performed by Stratton Players. Christ Church Guild Hall. 569 Main St.
email: strattonplayers.com for more info
Friday April 4th - Saturday April 12th, 2025

Fitchburg State University presents The Grand Royal Soiree of Cultural Excellence, Athletics and Recreation Center
Saturday April 5, 2025 6 p.m.

Artist Talk: Tara Sellios - Ask Now the Beasts
Fitchburg Art Museum, 185 Elm St., Fitchburg
Saturday April 5th, 2025 2-3:30pm

Fitchburg State University Spring Dance Club Showcase, Weston Auditorium, Pearl St Fitchburg
Friday April 11, 2025 6:30 p.m.
Saturday April 12, 2025 1pm

Fitchburg Easter Egg Hunt & Meet the Easter Bunny Free to attend.
Parkhill Park, 27 Franklin Rd., Fitchburg, MA
Saturday April 12, 2025 11am-1pm

Art in Bloom - 27th Annual
Fitchburg Art Museum, 185 Elm St., Fitchburg
Champagne Reception: Fri. April 25, 6-8pm
Thursday April 24th - Sunday April 27th, 2025
See our galleries transformed with 40 floral arrangements crafted by local florists, garden club members, artists, and community leaders inspired by the works of art on view.

Hike with Faith: Observing Nature
Crocker Conservation Area, 215 Flat Rock Rd
register at northcountylandtrust.org
Sun April 13th 2pm-4pm

North Central Mass Community Club Expo
569 Main St. **Monday, April 14 5:30 - 7:30**

St. Bernards Spring Carnival, 265 Summer St.
Starts Thurs April 17th 6pm-11pm

Fitchburg Celebrates Earth Day
Riverfront Park, Boulder Dr. Fitchburg, MA
Sunday April 20, 2025 12pm-3pm

Fitchburg Celebrates Earth Day
Lot next to City Hall, 730 Main St
April 22nd 2pm-5pm

Earth Day Park Cleanup
Gateway Park, 41 Sheldon St.
Celebrate Earth Day with a day of cleaning, gardening, and trail care.
register at northcountylandtrust.org
Sat April 26th 10am-12pm

"Spelling Bee" Performed by FSU Musical Theater Club,
Weston Auditorium, 353 North St.
Friday & Sat. April 25th & 26th 7pm
Sunday April 27th 2pm

Fitchburg State University Musical Theater Club
performs "Spelling Bee," Weston Auditorium,
Friday April 25th & Sat. April 26, 2025 7pm
Sunday April 27, 2025 2pm



Storytimes

All storytimes include songs, finger plays, movement, and stories

Storytime with Miss Jane (all ages)

Tuesdays 10:30 – 11 AM

Storytime with Miss Molly (all ages)

Wednesdays 10:30 – 11 AM

Tot Time (24–36 months) Thursdays 9:30 – 10:15 AM

Babygarten (birth–23 months) Thursdays 10:30 – 11:15 AM

Cuentacuentos: Spanish Language

Storytime (ages 0–6) April 12, 11:00 and April 22, 2:00 PM

Saturday Storytime (all ages), April 19, 10:30 – 11 AM

Arts & Crafts

Adults: Papier Mache Bird, April 2, 6:00 PM

Knitting Club, Thursdays, 12 – 3 PM

Teen Crochet, April 8 & 22, 3:30 – 4:30 PM

Teen Origami, April 3, 3:30 and April 25, 3:00 PM

Teen Pressed Flowers, April 17 4:00 PM

Teen 3D Color & Build Puzzle, April 23, 3:30 PM

Teen Owl Pellet Dissection, April 24, 3:00 PM

Family Craft Night, April 8, 6:00 – 7:00 PM

Children's Crafternoon, April 11, 3:30 – 4:30 PM

Mason Jar Terrariums (ages 6–12) April 23, 2:00 PM

Paint a Coin Bank (ages 6–12) April 25, 11:00 AM

STEAM Activities: Weekly activities focused on science, technology, engineering, art, and math (ages 6–12) April 3, 10, 14, 28 at 6:30 PM

STEAM Saturday, April 26, 1:00 – 3:00 PM

Community & Educational Programs

Friends of the Library Meeting,

April 14, 5:30 – 6:30 PM

Career Resources & Assistance,

April 14, 2–4pm

African Art Series (Zoom),

April 13, 2:30 – 4 PM

Local Author Night, April 17, 6:00 PM

Book Club

The Measure by Nikki Erlick, April 9 at 1:00PM and 6:30PM

Playgroups

MOC Playgroup,

April 24, 10:00 – 11:15 AM

Parachute Play,

April 28, 10:30 – 11:15 AM

Clubs & Gaming

LEGO club, April 10 & 24, 4 – 6 PM

Pokémon club, April 3, 4 – 6 PM

Teen Anime Club, April 15, 3:30 PM



Scan the QR code to visit the library's event calendar for dates and times.

FITCHBURGMA.GOV/LIBRARY



APRIL AFTER SCHOOL STEAM ACTIVITIES

PRESENTED BY Fitchburg Parks & Recreation and The Fitchburg Public Library through funding from the United Way of North Central Massachusetts and the Department of Elementary and Secondary Education.



UNITED WAY OF NORTH CENTRAL MASSACHUSETTS

**THU
03**

MAKE A BIRDHOUSE

Thursday, April 3 @ 6:30 PM
Ages 6-12. Registration required.



RAINBOW SKITTLES

Thursday, April 10 @ 6:30 PM
Ages 6-12. Registration required.

**THUR
10**

**MON
14**

EASTER CRAFT

Monday, April 14 @ 4:00 PM
Ages 6-12. Registration required.



DIY BIRD SUET

Monday, April 28 @ 6:30 PM
Ages 6-12. Registration required.

**MON
28**

CONTACT THE LIBRARY'S CHILDREN'S DESK AT 978-829-1789
OR EMAIL FPLYL@CWMARS.ORG TO REGISTER.



978-829-1780
fplyl@cwmar.org

Fitchburg Public Library



166 Boulder Dr. Fitchburg, MA 01420

The Fitchburg Public Library is pleased to offer a new service to help residents in our community who would like to borrow items, but are not able to get to the library due to health or transportation issues.

Learn more at

<https://www.fitchburgma.gov/1069/Outreach-Delivery-Program>

You may also contact the library at 978-829-1780 (option 2) or fplref@cwmar.org with any questions.



HOUSE BOUND? WE CAN DELIVER!

Unable to visit the library
due to transportation or
health issues?



You may be
eligible for our
**OUTREACH
DELIVERY
PROGRAM!**

Learn more at bit.ly/FPLDelivery
or call 978-829-1780, option 2

FITCHBURG PUBLIC LIBRARY | 978-829-1780 | FPLREF@CWMARS.ORG

FITCHBURGMA.GOV/LIBRARY



978-829-1780
fplref@cwmar.org

Fitchburg Public Library



166 Boulder Dr. Fitchburg, MA 01420



CITY OF FITCHBURG BOARD OF HEALTH

The MGH Bloodmobile will be returning to Fitchburg in front of the Legislative Building, 700 Main St. from 9:30am - 3:00pm on the following dates in 2025:

June 17

August 27

November 6

Pre-registration is required at

bit.ly/MGHBlood



Join us for the 2025 Great Fitchburg City Cleanups!

Join us to clean our streets and parks of litter and debris. Please bring friends with work gloves and a helping hand.

We provide bags, Plastic gloves & disposal.

City Cleanups and Events are 8AM - 12PM



2025 GREAT FITCHBURG CITY CLEANUPS

HOME
CLEANOUTS
NOT
ACCEPTED

JOIN US TO CLEAN OUR STREETS AND PARKS OF LITTER AND DEBRIS. PLEASE BRING FRIENDS WITH WORK GLOVES AND A HELPING HAND. WE PROVIDE BAGS, PLASTIC GLOVES AND DISPOSAL.

CITY CLEANUPS AND EVENTS ARE 8AM - 12PM AT THE FOLLOWING LOCATIONS:

APRIL 19: VOLUNTEERS MEET @ LOT HIGH/PLEASANT STREETS.

APRIL 26: VOLUNTEERS MEET @ DANIELS ST. PARK

MAY 3: VOLUNTEERS MEET @ 44 WANOOSNOC RD.

MAY 10: VOLUNTEERS MEET @ BAC/STANLEY PARK 1 SIMONDS RD

BONUS: APRIL 26 10AM-12PM GATEWAY PARK CLEANUP - SHELDON ST.

COFFEE, DONUTS, A LIGHT LUNCH AND REFRESHMENTS PROVIDED BY SALVATION ARMY FITCHBURG

LED AND CRT-TV'S AND MONITORS WILL BE ACCEPTED WITH A \$10 FEE

****Mattresses & Boxsprings will be accepted with a \$20 fee each****

Questions: contact the Health Dept. (978) 829-1870

Together we can make Fitchburg a cleaner place!

Sponsored by the City of Fitchburg Health Department and Department of Public Works



CITY OF FITCHBURG BOARD OF HEALTH



Congratulations!

VICTORIA SELSER, EPIDEMIOLOGIST, CITY OF FITCHBURG **LOCAL PUBLIC HEALTH LEADERSHIP AWARDEE**

The Local Public Health Leadership Award is reserved for someone who has made a great impact in their community by service working directly in municipal local public health. The recipient of this award shall have contributed their efforts to a more equitable, efficient, and effective local public health system. Special consideration will be given to those working in contexts of few resources and great need.

Victoria Selser is an Epidemiologist with the City of Fitchburg Health Department and the Montachusett Public Health Network, a regional collaborative of local health departments in north central MA. Her public health journey began during the early stages of the COVID-19 pandemic, just as she was completing her undergraduate degree in microbiology at the University of Massachusetts Amherst. As Massachusetts was scaling up the pandemic response, Victoria joined the public health workforce in April 2020 as a Contact Tracer for the Community Tracing Collaborative (CTC) – a joint project between the Massachusetts Department of Public Health and the global health nonprofit Partners in Health (PIH). She later transferred to the specialized unit within the CTC known as the Epidemic Intelligence Unit, where her role as an Outbreak Specialist involved collaborating with local health departments to identify, investigate, and respond to suspected outbreaks of COVID-19. Victoria's experience of working with PIH shaped her views on health equity and justice and fostered her commitment to improving health outcomes.

Following the closure of the CTC in December 2021, Victoria transitioned to her current role as a local health Epidemiologist. In this role, her responsibilities range from analyzing data to evaluate community health needs to administering community-based clinical and educational public health interventions, to grant-writing, to managing and responding to reportable conditions. Most notably, Victoria identified gaps in healthcare access in her communities and worked to establish a free clinic, now formally known as the North Central Free Medical Program. She also currently serves on NACCHO's Epidemiology Workgroup.



CITY OF FITCHBURG BOARD OF HEALTH

Community Input Needed: Opioid Abatement Funds

Community Input Needed: Opioid Abatement Funds

We want to hear from YOU! Join us for a Community Input Forum on how Fitchburg should prioritize Opioid Abatement funds. Your voice matters in shaping how these resources are used to support those affected by the opioid crisis in our community. Let's work together toward a stronger, healthier Fitchburg!

Thursday, April 3 at the Legislative Building, 700 Main St.

9:00 AM & 6:00 PM (Two sessions to fit your schedule!)

Can't make it in person? Share your input through our online survey— English or Spanish:

English: <https://forms.gle/MQhyq2TwEeAtzHHbA>

Spanish: <https://forms.gle/DWuDysU37Y3nZTV97>

Prefer a paper survey? Pick one up (and drop it off) at:

City Hall (Health Department, 2nd Floor & Mayor's Office, 3rd Floor)

Fitchburg Senior Center (Main Lobby & Outreach Office, 2nd Floor)

Fitchburg Public Library

We're also bringing the conversation directly to the community! Forums will be held at local agencies to ensure more voices are heard. Special thanks to Community Health Connections ACTION, Restoration Recovery Center, Fitchburg Community Support Center of the Worcester County Sheriff's Office, and Making Opportunity Count for helping us reach those impacted.

Your input is vital—help us make a difference in how these funds are used to support our community. Let's work together toward a stronger, healthier Fitchburg!



The City of Fitchburg Health Department and Mayor Samantha M. Squallia invite you to attend a

COMMUNITY INPUT FORUM

The City of Fitchburg is holding Community Input Forums for residents to speak on priorities for opioid abatement funds

Date: Thursday, April 3, 2025
Two Times: 9:00am & 6:00pm
Place: Legislative Building
700 Main Street

Join us to~

- Share any personal impact or lived experience you or your family have had as a result of the opioid epidemic
- Share your ideas about what resources you'd like to see in our community
- Share your thoughts on what gaps exist in services currently available

*Handicapped accessible * Refreshments will be served*

Scan here to complete the survey in English or Spanish

English



SCAN ME

Spanish



SCAN ME

Paper surveys are available at:

City Hall - Health Department (2nd Fl) & Mayor's Office (3rd Fl)
Senior Center - Lobby & Outreach office (2nd Fl)
or call (978) 829-1854 for more information

Other Input Forums to be held:

- CHC ACTION clients
- Community Justice Support Center Reentry Program clients
- MOC First Steps Program participants
- Restoration Recovery Center Members

CITY OF FITCHBURG BOARD OF HEALTH

WE ARE NOW ACCEPTING ORDERS FOR YOUR 2025 EARTH MACHINE COMPOSTING BINS.

ORDERS WILL BE ACCEPTED FROM MARCH 17TH, 2025 – APRIL 21, 2025.

COMPOSTING BINS CAN BE ORDERED HERE:

BIT.LY/01420COMPOST

A video of how to use the composting bins can be found here : <https://www.youtube.com/watch?v=XOBGr-947ck>

The only pick up date will be: Date: Saturday June 7, 2025 from 9am-1pm.
Location: 200 Boulder Drive, (the parking lot shared with the Fitchburg Library and the Fitchburg Redevelopment Authority)

The compost bin will be unassembled, and the size of the package will be 33" X 33" X 24" tall. The bins will fit into most standard 4 door sized cars.

To give you a better idea of the pick-up location, please see the attached aerial photo. The Blue X indicates the spot for the compost bin pickups, and the Red dot indicates an entrance, and the Purple dot indicates the exit.

Thank you, and happy composting, -Sean-Michael Tantinarawat (He, Him, His), Food and Milk Inspector Board of Health





FITCHBURG PUBLIC SCHOOLS

FITCHBURG HIGH TRIVIA NIGHT

Time to test your Red Raider knowledge.

Celebrating 175 years!

\$100 per team (max of 5 players)

WHEN: Friday, April 11

**WHERE: The Knights of Columbus
(165 Electric Ave. Fitchburg)**

TIME: Doors open at 6 p.m. Game starts at 7 p.m.

TEST YOUR RED RAIDER KNOWLEDGE

FITCHBURG HIGH TRIVIA NIGHT

Celebrating 175 Years!

VISIT HERE TO SIGN UP

\$100 a Team
Max of 5 players

FRI APRIL 11

PRIZES | FUN | CASH BAR | SNACKS
4 ROUNDS | 10 QUESTIONS EACH

Doors Open at 6:00
Game Starts at 7:00

Hosted at
The Knights of Columbus
165 Electric Ave. Fitchburg, MA

***ADULTS ONLY**

Fitchburg Public Schools

Enroll now for
2025-2026

KINDERGARTEN ENROLLMENT

STARTS APRIL 1

THE FITCHBURG PUBLIC SCHOOLS INVITES YOU TO ENROLL YOUR CHILD IN KINDERGARTEN FOR THE UPCOMING SCHOOL YEAR!

PLEASE VISIT THE ENROLLMENT DEPARTMENT WEBSITE FOR MORE INFORMATION!

SCAN ME!

QUESTIONS? CONTACT US:
(978) 345-3200 x5
FPSEnrollment@fitchburg.k12.ma.us

The Fitchburg Public Schools invites you to enroll your child in **Kindergarten** for the upcoming school year, **beginning April 1!**

Please visit the Enrollment Department website for more information!

<https://sites.google.com/fitchburg.k12.ma.us/fpsenrollment/>

The Enrollment Department can be contacted with any questions at **FPSEnrollment@fitchburg.k12.ma.us** or **978-345-3200 x5**.

Fitchburg Department of Public Works

PAVING Operations

Scheduled to Begin Week of April 7th with Westminster St & River St

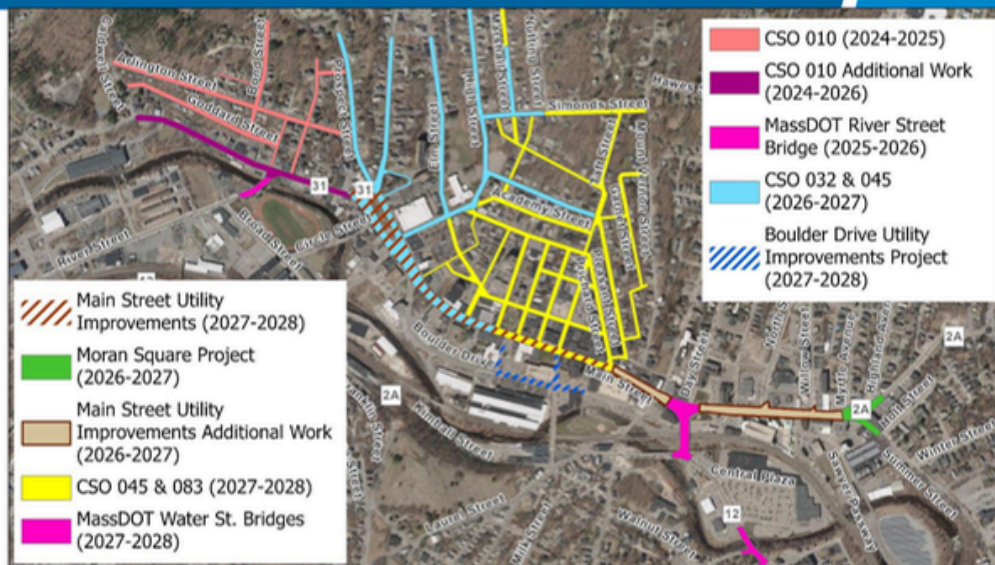
Our paving list is anticipated to be (will adjust based on further input):

- o Final work on Clarendon Street (Daniels to Franklin), Concrete Sidewalks
- o Electric Ave. from Eastern Ave (Coggshall Park) to Rollstone St. Roundabout
- o Airport Road (from Bemis Rd to Crawford St)
- o Pearl Street (from Klondike Ave to Lunenburg Town Line/White St)
- o Klondike Avenue (from Pearl St to Lunenburg St)
- o Fairbanks Street (South St to Munroe St)
- o Munroe Street (All)
- o Birch Street (Munroe St to Albee St)
- o Game On Way (Victoria Lane to Industrial Rd) Top Coat (Binder already exists)
- o Victoria Lane (Industrial Way to Game On Way)
- o Roper Road (Industrial Rd to Westminster Town Line)
- o Ashby West Road (Ashburnham Hill to Scott Rd) (Rindge to 80' beyond Culvert)
- o Nichols Road (Mechanic St to Drepanos Dr)

Check HERE for intown infrastructure updates:

fitchburgma.gov/873/Intown-Infrastructure-Updates

PAVING AREA OVERVIEW



Join Other Like Minded Adults with
Common Interests & Passions in the Area!

North Central Mass Community Club Expo

Find your people! Make friends!

FREE ADMISSION & FOOD

Monday, April 14, 2025

5:30-7:30pm

Guild Hall

(The Christ Church gym,
Stratton Players theatre,
& Fitchburg Cultural Alliance)

569 Main St

Fitchburg, MA 01420

CommunityClubExpo.weebly.com

Table Sign Up: Form.Jotform.com/CuriousER/CommunityClubExpo

Social Clubs, Workshops, Activity Centers, Volunteer Orgs, Local Event Promoters



KICK OFF APRIL '25

MUSIC PROVIDED & SPONSORED BY

ORGANIZED IN PARTNERSHIP BY



EVENTS

JOIN US FOR OUR ANNUAL

Easter Egg Hunt

MEET THE EASTER BUNNY



APRIL 12, 2025

11 AM - 1 PM

PRATT RD. (PARK HILL SPLASH PARK)

FITCHBURG, MA 01420



Thurston
Consort

Thurston Consort Duet Ensemble

*presents a free
Brown Bag Cunchtime Concert*

*at
Fitchburg City Hall
718 Main Street, Fitchburg, MA*

*Friday, April 18th
Noon to 1:00 pm*



COMMUNITY DEVELOPMENT



FITCHBURG CELEBRATES EARTH DAY!

Join us on April 22, 2025 from 2PM-5PM for a community Earth Day gathering right next to City Hall at 730 Main Street!

Let's come together to honor our planet and promote sustainable living. There will be activities, opportunities to learn about environmental initiatives, & ways to get involved in protecting the beautiful city we call home 🌱

📍 **Location: Lot adjacent to City Hall, 730 Main Street**

📅 **Date: Monday, April 22, 2025**

🕒 **Time: 2:00 PM – 5:00 PM**

For more information, contact our Conservation Agent Herlin Jaime at 📞 978-829-1951

✉️ HJaime@fitchburgma.gov

Let's celebrate Earth Day together ❤️

A banner for the Native Plant Pop-Up Market. The top part has a blue background with the text "Native Plant Pop-Up Market" in white and green, with a small plant icon. Below this is a photograph of the market event, showing people browsing plants under a blue tent. A sign in the foreground reads "NATIVE PLANT Pop-Up Market Grow Native Massachusetts". To the left of the photo, a yellow box contains the text: "By partnering with farmer's markets and community events and bringing together growers from our native nursery network, we ensure each event will have ample plant selection and inventory!". At the bottom, a blue box contains the text: "Fitchburg Town Hall April 22nd 2-5pm Happy Earth Day!". To the right of this, another blue box contains the text: "Find all of our pop-ups: grownativemass.org/our-programs/calendar Grow Native Massachusetts Every garden matters - Every landscape counts".

FITCHBURG MUNICIPAL AIRPORT



New T-Hangars Breaking Ground Soon

Rockin Horse Enterprises LLC is expected to break ground on 30 new T-hangars on May 1, 2025. Construction is expected to be complete by the end of September 2025, followed by an additional 30 hangars and future box hangars. The first 30 hangars are already sold.

Rockin Horse Enterprises has signed the agreement... we're now awaiting final signatures from the Airport Commission and the City.

Women in STEM Presentations at the Airport

April 17, 2025 1pm – Presentation and guided tour for Fitchburg High School's Women in STEM program

May 1, 2025 1pm – Presentation and tour for Women in STEM and ROTC, featuring Tara Sweeney, FPS STEM ambassador

Wings & Wheels Event – April 27, 2025 10am-3pm

Join us for a day of classic cars, aircraft exhibits, parts sales, and community fun!

- Aircraft on display from the Fitchburg Pilots Association
- Piston and turboprop planes
- PT-23 Warbird flights available: Commemorative Air Force

Airport Manager Position: The Airport Manager position is now posted and will be starting July 1, 2025. [FitchburgMA.gov/jobs](https://fitchburgma.gov/jobs)

Part-Time Linemen Positions: Two part-time linemen positions are currently advertised and will be available beginning April 7, 2025.

Restaurant Pad Site Available

Prime Location: 20,000 sq. ft. PAD-READY site with utilities already onsite. Build YOUR restaurant the way YOU want with LOW sf rental costs.

Visibility & Access: Easy access to Routes 2 and 190, with traffic from both aviation enthusiasts and the local community.

High Flying Atmosphere: Great views of the new 5,001ft runway, offering an inviting aviation-themed dining experience.

Flexible Terms: Lease options from 10 to 50 years

more info: fitchburgma.gov/Bids

Contact Procurement Director Mary Delaney at 978-829-1850 or mdelaney@fitchburgma.gov

CHECK OUT THE FRIDAY MARCH 28TH BOSTON GLOBE ARTICLE:

Fitchburg looks to the arts to jump-start its economy

\$45 million project to develop artist-preferred affordable housing is critical piece in broader bid to leverage culture to help revitalize the Gateway City

By Malcolm Gay

Images by Lane Turner

bostonglobe.com/2025/03/28/arts/fitchburg-arts-culture-economy-housing/



FOR MORE INFO

FITCHBURGMA.GOV

FITCHBURGMASS.ORG

FITCHBURGARTMUSEUM.ORG

978-829-1801 MAYOR@FITCHBURGMA.GOV